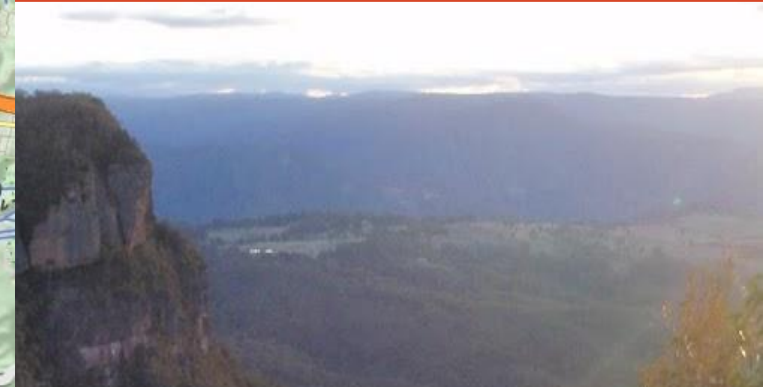



Cox's River return via Narrowneck



2 Days

Very experienced 

47.8 km One way  2390m

This walk is a great, two day walk that drops down from Katoomba to Cox's River in the Megalong Valley. From the scenic Cox's River, the walk returns to Katoomba via Dunphy's campsite and Narrowneck. The trip is two solid days of walking that takes in some breathtaking views of the Blue Mountains. These notes are now several years old, and the environment will have changed, This walk is only for people comfortable walking off track, dealing with cliff passes and steep terrain in remote areas.

1071m

203m

Blue Mountains National Park

Free Beacon Hire

A Personal Locating Beacon (PLB) is a hand-held device that, when triggered, sends a message to the emergency services with your location. The emergency services staff can then look at your trip intention forms and decide how best to help you. In the Blue Mountains, you can borrow these for no charge, just complete this [Trip intention form](#), and a borrowing form. The device can be picked up from: NPWS Office - Govetts Leap Rd Blackheath - 9am to 4pm 7 days Ph: 02 4787 8877 Katoomba Police Station - 217 Katoomba St Katoomba - Anytime Ph: 02 4782 8199 Springwood Police Station - 4 Jerseywold Avenue Springwood - Anytime Ph: 02 4751 0299 [More info](#).

Explorers Tree (Katoomba)

In 1813, the explorers Gregory Blaxland, William Wentworth and William Lawson, on their historic crossing of the Blue Mountains, engraved their names not only into the history books, but also reportedly into this tree on the side of Pulpit Hill. The tree now long dead was caged in 1884 in an attempt to preserve the engravings. The engravings are no longer visible and there is even debate over the last 100+ years as to the authenticity of the engravings.

Megalong Village (Historic)

In 1870, kerosene shale was discovered in the area surrounding the upper end of Megalong and Diamond Creeks so in 1885, Mr J. B. North started to mine the resource. The mine continued for nearly 10 years. During the life of the mine, the Megalong Village grew to a small town with a hotel, butchery, bakery, public hall and around about 40 families. When the mines were closed in 1904, the best buildings were demolished and rebuilt in Katoomba. In the December of 1904, a huge bushfire ripped up through the valley destroying what buildings were left. Now the area is private land with a horse paddock with a view of the escarpment behind. A small bronze sign marks the site.

Megalong Cemetery (historical)

The Megalong Cemetery became the final resting place for at least 14 people who died between 1894 and 1931. Many of the grave sites are in poor repair or can no longer be easily found - please take care in the area to avoid any further damage. A tall stone monument marks the edge of the cemetery on the Six Foot Track, about 100m west of Megalong Road. This cemetery is currently under the management of the Blue Mountains City Council, and is recognised by the National Trust.

Before You walk

Bushwalking is fun and a wonderful way to enjoy our natural places. Sometimes things go bad, with a bit of planning you can increase your chance of having an enjoyable and safer walk. Before setting off on your walk check

- 1) Weather Forecast ([BOM Central Tablelands District](#))
- 2) Fire Dangers ([Central Ranges, Greater Sydney Region](#))
- 3) Park Alerts ([Blue Mountains National Park, Kanangra-Boyd National Park](#))
- 4) Research the walk to check your party has the skills, fitness and equipment required
- 5) Agree to stay as a group and not leave anyone to walk solo

Think before you TREK

The 'Think before you TREK' program developed by NSW Police & NPWS promotes the benefits of planning ahead for your bushwalking trip by using an easy to remember acronym:

- T** Take adequate supplies of food, water, navigation and first aid equipment.
- R** Register your planned route and tell friends and family when you expect to return.
- E** Emergency beacon (PLB's) should be carried on walks with significant gaps in mobile coverage (check terrain profile).
- K** Keep to your planned route and follow the map and walking trails.

Topo Maps

The maps provided on wildwalks are helpful, but there are times where you may need maps covering a broader area. Maps that cover this walk include;

1:50 000 Map Series:Six Foot Track

1:25 000 Map Series:89304S HAMPTON, 89303N JENOLAN, 89302N JAMISON, 89301S KATOOMBA

1:100 000 Map Series:8930 KATOOMBA

Grade

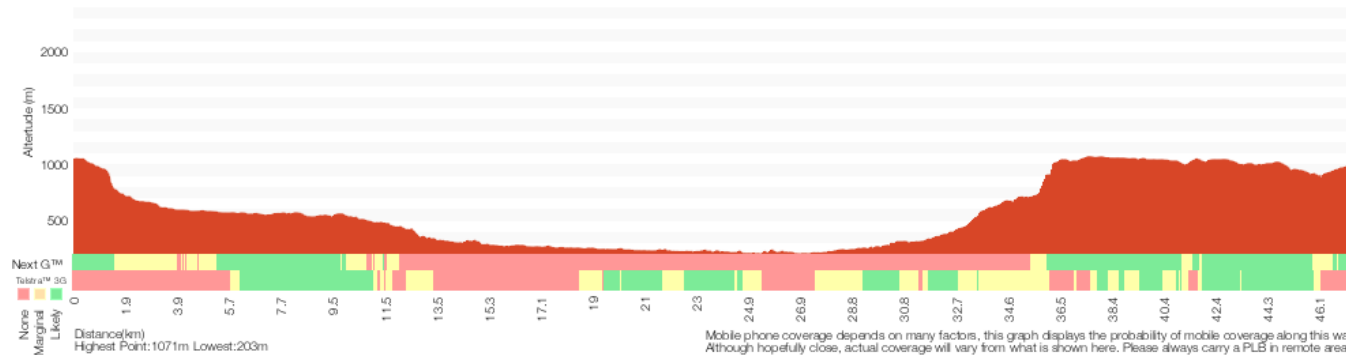
This walk has been graded using the AS 2156.1-2001. The overall grade of the walk is determined by the highest classification along the whole track.



Grade 6/6
Very experienced only

Length	47.8 km One way
Time	2 Days
Quality of track	Off track (no visible track at times) (6/6)
Signs	No directional signs (5/6)
Experience Required	High level of bushwalking experience recommended (5/6)
Weather	Forecast, unforecast storms and severe weather likely to have an impact on your navigation and safety (5/6)
Infrastructure	Limited facilities (such as cliffs not fenced, significant creeks not bridged) (4/6)

*** This walk passes through very remote areas and sections have no visible track. At least one person in your group should have training and experience in off track walking and navigation. Even with these notes and a GPS these extra skills and equipment are required.**



Are you ready to have fun?

Please ensure you and your group are well prepared and equipped for all possible hazards and delays. Check park closures, weather information and Fire Danger Rating before setting out. Optional side trips and alternate routes noted are not included in this walk's overall grade, length or time estimate. Please allow extra time for resting and exploring areas of interest. The authors, staff and owners of wildwalks take care in preparing this information but will not accept responsibility for any inconvenience, loss or injury you may experience. Please take care, have fun - Happy Walking. **Experienced walkers only: This walk passes through very remote areas and sections have no visible track. At least one person in your group should have training and experience in off track walking and navigation. Even with these notes and a GPS these extra skills and equipment are required.**

Getting there You can get to Explorers Tree (gps: -33.704, 150.2913) by car or bus. Car: There is free parking available.

You can get back from Scenic World (gps: -33.7286, 150.301) by car or bus. Car: There is free parking available.

Find up to date and more information including; travel directions, weather, park closures and walker feedback at <http://wild.tl/crrvdc>

0 | Free Beacon Hire

A Personal Locating Beacon (PLB) is a hand-held device that, when triggered, sends a message to the emergency services with your location. The emergency services staff can then look at your trip intention forms and decide how best to help you. In the Blue Mountains, you can borrow these for no charge, just complete this [Trip intention form](#), and a borrowing form. The device can be picked up from: NPWS Office - Govetts Leap Rd Blackheath - 9am to 4pm 7 days Ph: 02 4787 8877 Katoomba Police Station - 217 Katoomba St Katoomba - Anytime Ph: 02 4782 8199 Springwood Police Station - 4 Jerseywold Avenue Springwood - Anytime Ph: 02 4751 0299 [More info](#).

0 | Explorers Tree

(260 m 5 mins) From the 'Explorers Tree' (at the intersection of Nellies Glen Rd and the Great Western Hwy), this walk follows the 'Six Foot Track - 200m' sign up along the sealed Nellies Glen Rd for just over 200m before turning left at another 'Six Foot Track' sign. Here the walk comes to a dirt car park and shelter with a large 'Six Foot Track' information sign.

0.26 | Six Foot Track Info Shelter

(550 m 12 mins) Continue straight: From the shelter and car park (on Nellies Glen Rd), this walk follows the 'Six Foot Track' sign around the lower locked metal gate to follow the management trail gently downhill. The walk continues down this trail, which becomes fairly steep in places, for about 500m. Here the trail flattens out and comes to an intersection marked with a couple of 'Six Foot Track' signs and a 'Nellies Glen Bushland Restoration' sign.

0.81 | Explorers Tree (Katoomba)

In 1813, the explorers Gregory Blaxland, William Wentworth and William Lawson, on their historic crossing of the Blue Mountains, engraved their names not only into the history books, but also reportedly into this tree on the side of Pulpit Hill. The tree now long dead was caged in 1884 in an attempt to preserve the engravings. The engravings are no longer visible and there is even debate over the last 100+ years as to the authenticity of the engravings.

0.81 | Int of Six Foot Track and Norths Lookout Trail

(1.6 km 44 mins) Turn right: From the intersection, this walk follows the 'Six Foot Track' sign, fairly steeply down the management trail past the 'Nellies Glen' metal plaque and, about 10m later, past the timber 'Nellies Glen' sign.

After another 80m, the trail narrows and this walk turns left to head through the green timber chicane with the 'Caution - Steep Decent' and 'Pedestrian Access only' signs. As the sign suggests, this walk now leads steeply down the Nellies Glen canyon steps for about 300m, passing alongside the tall rock walls and crossing the usually small creek a few times before bending distinctly left to cross below a small set of falls (below the main Bonnie Doon Falls). Here the track mostly flattens out and leads along the side of the gully for another 400m to pass a 'Blue Mountains National Park' sign, then just over 100m later, passes another sign marking the lower end of 'Nellies Glen'. About 600m after this sign, the track bends to cross a narrow gully then leads up to a small clearing at the northern end of the wide Nellies Glen trail.

2.44 | Int at Lower Nellies Glen

(2.1 km 37 mins) Veer left: From the clearing, this walk follows the wide trail gently downhill while keeping the valley to your right. The trail leads generally downhill through the scribbly gum forest for about 1.4km to then cross the culverted Devils Hole Creek - just past the creek is an unused concrete pipe with wild bee hives inside. This walk continues along the trail for another 500m to an intersection with the Devils Hole Trail (on your left), marked a 'Six Foot Track' and a 'Ladders have been removed' sign.

Continue straight: From the intersection, this walk follows the 'Six Foot Track' sign along the Nellies Glen trail, to cross the culverted Diamond Creek to then come pass alongside the old Megalong 'Village site' and horse paddock (which is on your left).

4.5 | Megalong Village (Historic)

In 1870, kerosene shale was discovered in the area surrounding the upper end of Megalong and Diamond Creeks so in 1885, Mr J. B. North started to mine the resource. The mine continued for nearly 10 years. During the life of the mine, the Megalong Village grew to a small town with a hotel, butchery, bakery, public hall and around about 40 families. When the mines were closed in 1904, the best buildings were demolished and rebuilt in Katoomba. In the December of 1904, a huge bushfire ripped up through the valley destroying what buildings were left. Now the area is private land with a horse paddock with a view of the escarpment behind. A small bronze sign marks the site.

4.5 | Megalong Village site

(1.1 km 18 mins) Continue straight: From the beside the historic Megalong 'Village site', this walk heads along the wide trail, initially keeping the horse paddock and view to the escarpment to your left after just shy of 250m this walk heads through a usually closed gate and continues gently undulating along the trail through the tall scribbly gum forest for 500m, crossing a usually small creek to then pass a 6FT '40km' arrow post. About 400m further along this trail, soon after crossing the usually small Corral Creek, this walk comes to a T-intersection, where a 'Six Foot Track', sign points back along the trail, and where there are some power lines to your right.

5.6 | Intersection of Medlow Gap Management Trail and 6

(1.5 km 26 mins) Veer right: From the intersection, this walk heads west along the Nellies Glen Road trail, initially keeping the power lines to your right. After about 170m this walk veers right at the locked 'Wari-Wari' gate to climb the fence using a stile. The walk continues along the (now public) dirt Nellies Glen Road, for 900m passing a series of driveways, to rejoin then power lines for 120m passing just below a nearby house. Here the road leads downhill for 200m to pass a large 'Road subject to flooding...' sign then just 100m later this walk comes to an intersection with 'Six Foot Track' sign and stile (just before the road bends right to cross Megalong Creek).

7.09 | Megalong Ford

(1.1 km 22 mins) Continue straight: From the intersection, this walk follows

the 'Six Foot Track' sign over the fence using the stile. A sign reminds walkers to stay on the track as this section is on private property. The walk leads through mostly open farmland for 130m passing a 'Private Land No Camping' sign to then cross Mitchells Creek, this creek may become impassable after heavy or prolonged rain. Over the next 300m the trail leads over a rise through the farmland to then cross a fence using a stile on the right. The track now leads through a denser forest for another 300m to cross 'McLennan Bridge', named after Mr Michael (Mick) McLellan who has been in charge of the maintenance of the 6FT for many years. Just shy of 150m after the bridge this walk continues straight at a four-way intersection for another 200m to cross a fence using a stile. Here the walk crosses the sealed Megalong Rd, to find a car park beside a clearing and several 'Six Foot Track' signposts (about 400m south of Megalong Creek).

8.23 | Int of 6 Foot Track and Megalong Rd

(100 m 2 mins) Continue straight: From the car park on Megalong Road (about 400m south of Megalong Creek), this walk follows the 'Six Foot Track' sign over the cattle grate or stile and goes beside the large sheltered 'Six Foot Track' information sign. Here the walk heads gently downhill along the dirt road for about 80m to come beside a stone memorial, marking 'Megalong Cemetery' (on your left).

8.32 | Megalong Cemetery (historical)

The Megalong Cemetery became the final resting place for at least 14 people who died between 1894 and 1931. Many of the grave sites are in poor repair or can no longer be easily found - please take care in the area to avoid any further damage. A tall stone monument marks the edge of the cemetery on the Six Foot Track, about 100m west of Megalong Road. This cemetery is currently under the management of the Blue Mountains City Council, and is recognised by the National Trust.

8.32 | Megalong Cemetery

(770 m 15 mins) Continue straight: From beside 'Megalong Cemetery', this walk heads gently downhill along the dirt road for about 80m to pass through gate with a 'No Through Road' sign. Just shy of 300m later, this walk passes a few driveways, beside the farmland to cross another cattle grate. Then about 150m later, the road leads close to Megalong Creek, where a sign reminds visitors this is private land. About 30m further on, the main dirt road veers right at a Y-intersection then crosses a cattle grate. Here the walk heads uphill along the dirt road for just over 200m (with views of the escarpment behind) to cross another grate and come to an intersection marked with a 'Six Foot Track' sign pointing right into the valley.

9.09 | Int Near Guyver Bridge

(1.9 km 41 mins) Turn right: From the intersection, this walk follows the 'Six Foot Track' sign downhill along the narrow track into the valley. The walk now crosses a small creek on the timber 'Guyver Bridge', named in honour of Jon Guyver who worked hard to redevelop the 6FT as the track coordinator/administrator until 2010. Here the walk heads up the timber steps and over a rise. The track now follows a wire fence down through the farmland and across a valley (above a dam) for almost 100m to metal stile just before a dirt trail. Here the walk turns right and crosses the fence using the stile, then follows a 'Six Foot Track' sign along the track as it undulates over a series of hills for about 300m before crossing another fence using another metal stile beside a large tree. The track now leads uphill for 200m to pass a 'Private Land - No Camping before Coxs River Reserve' sign, then winds along the side of the hill for a further 150m before heading into a wooded forest and down some timber steps. The walk then crosses a steep gully and winds along the side of the hill for just over 100m to pass a '35km' 6FT arrow post, then 150m later, crosses another fence using a metal stile. Here the walk continues for another 600m through a mix of farmland and

open forest, crossing a few more steep gullies with timber steps to head through a closed gate, marked with a few 'Private Property' signs.

10.94 | Private Gate

(3.4 km 1 hr 25 mins) Continue straight: From the gate, this walk heads downhill along the narrowing track, keeping the valley to your right. After about 120m, this walk crosses a timber fence on a metal stile, then continues down the track over a few large rocks for just over 200m, to an intersection with a wide trail. Here the walk turns right then immediately left, to continue along the track as it narrows again. The track then leads down along the side of the valley for about 600m and passes through another usually closed gate, then about 250m later, the track passes a few granite boulders and heads down a few timber steps. About 400m after this, this walk heads down a 100m-long series of timber steps to cross a gully and find a series of large granite boulders - one of the small overhangs is home to a wild bee hive. The track leads out of the valley and gently down along the side of the hill for about 1km, where the valley opens up with wider views down to the Coxs River, then heads down some more timber steps. About 250m later, the track leads down another set of timber steps to then head through a pleasant lush gully with views close to the river. The track then heads along the hillside for another 150m to an intersection (just above the swing bridge, to your right), marked with a 'Six Foot Track' and 'Alternative Bridge' signs.

14.38 | Bowtells Swing Bridge

(130 m 4 mins) Turn right: From the intersection, this walk follows the 'Alternative Bridge When River High' sign down the timber steps to the southern end of the 'Bowtells Bridge'. Here the walk climbs the ramp and crosses the Cox's River on the suspension bridge, observing the 'Only one Person at a time' safety sign. This crossing can take some time with a large group - the bridge does swing a fair bit and people concerned by heights may find this challenging. The bridge spans 100m, giving great views of the river below. On the far side, this walk steps off the bridge onto the large rock platform.

14.51 | Bowtells Swing Bridge

This suspension footbridge spans the Coxs River and provides an alternate route for the Six Foot Track when the river is in flood. Regardless of weather, this route is now becoming more popular with many walkers, wanting to avoid the river crossing. The bridge was built and opened in 1992 by the Royal Australian Engineers. The bridge is named after a fellow soldier of the builders, Corporal Bob Bowtell, who suffocated and died in foul air whilst attempting to clear a tunnel of the VC during the Vietnam war. Bowtell grew up in Katoomba and is now buried in West Malaysia.

14.51 | Bowtells Bridge West

(1.2 km 28 mins) Continue straight: From the north side of the bridge, this walk heads up the timber steps through the dense forest to soon pass the 'Bowtells Bridge' sign. At the top of these steps, the track bends left then leads along the side of the hill for 500m, crossing a few gullies and undulating up and down a series of timber steps to then pass between a couple of fences posts. Here the walk continues down a series of timber steps to a clearing and intersection marked with a 'Private Land - No Camping' sign.

Turn sharp right: From the intersection and clearing, this walk follows the 'Camping Ground-500mtrs' sign north up the timber steps. The track soon bends left and follows the side of the hill for about 130m to then head through a gate with a 'Welcome' sign. The walk continues along the clear track for another 70m to the intersection with the timber path just below the 'Six Foot Track Lodge'.

Continue straight: From the intersection below the 'Six Foot Track Lodge', this walk follows the clear track west initially keeping the lodge up to your

right. After about 30m this walk crosses a gully then climbs over a fence using stile. Here the walk turns right and follows the track for almost 50m to a T-intersection with a wide trail, beside a private property gate and marked with several 'Six Foot Track' signs.

Veer left: From the intersection, this walk follows the 'Camping Ground-200m' sign gently down along wide trail. After about 230m the trail flattens out and passes below the main camping area marked with a 'Coxs River Reserve' sign. About 30m past here, this walk comes to a clear intersection with a dirt road marked with a 'Six Foot Track' sign.

15.71 | Coxs River Camping Area

Cox's River Campsite, on the Six Foot Track, is situated on the western bank of the Cox's River. It provides a shelter, water (rain tank or creek - treat before drinking either), picnic tables, toilet and a flat grassed camping area with excellent access to the river.

15.71 | Coxs River

The Coxs River starts west of Katoomba, running south-east as the main tributary for the Warragamba Dam. The Six Foot Track crosses the river using on the slippery rounded stones or, when in flood, the large metal Bowtells Bridge. The campsite is located a short distance up the west bank from where the 6FT crosses. The water must be treated before drinking. The river provides some potentially nice swimming spots, with pools and interesting granite rock formations, be very careful if deciding to swim as it can also be a very dangerous.

15.71 | End of day 1

This is the planned overnight stay for the end of day 1, happy camping.

15.71 | Coxs River Campsite

(170 m 3 mins) Turn sharp left: From the the intersection south of the Coxs River Campsite, this walk follows the 'Six Foot Track' sign downhill for 40m to the sandy beach on the bank of the river. Please heed the 'Do Not Cross River When In Flood Use Alternative Bridge' warning sign, this river is normally about shin deep, if deeper consider using the swing bridge upstream. From the beach, this walk crosses the river that may flow in two or three sections across smooth and slippery rocks. On the far side this walk comes to a clearing on the floodplain.

15.88 | Cox's River Campsite (East)

(3.1 km 1 hr 1 mins) Turn right: From the east side of the Cox's River Campsite, this walk heads south-east alongside the river, through the pastures where cows often graze. At this point, the track is not defined. As such, the best navigational tool is the river. After leaving the paddocks, the walk continues between the fence on the hill, and the river. There are numerous 'No Entry' signposts, indicating private property - in order to walk through this section of land, you will need to obtain permission from the owners or walk right next to the creek, which is public land. This walk continues around the river, turning to the east, taking the easiest routes around the numerous boulders and rocks strewn around. The walk continues in this manner, as the river turns back around to the south. Power lines can be seen in the distance. After crossing underneath these, the walk continues for approximately 100m before coming to an intersection with a management trail, marked by a bridge going across the Cox's River.

19.01 | Little River and Coxs River Int

(3.3 km 1 hr 5 mins) Turn left: From the intersection, this walk heads south-east along the management trail, keeping the river to the right. After approximately 100m, the walk breaks off the trail and heads down to the creek through the cattle gate (remember to leave the gate as you found it). The walk then follows the river south, passing a house on a private property to the left. Following the river, this walk gradually bends around to the west, the trail becoming more distinct as it passes several creeks and gullies. The walk then comes to a sharper bend in the river to the south (left), where the walk comes to an intersection with a track, up the hill on the left. (This is not long before Quartpot Gully.)

22.31 | Quartpot Gully/ Coxs River Track Intersection

(1.7 km 35 mins) Continue straight: From the intersection, this walk heads south, keeping the Cox's River on the right. The walk follows a reasonably well-defined bush track, however at times this becomes slightly less well-defined, particularly in the areas of high grass and boulders. There are occasional ventures through stinging nettles. The walk passes numerous signposts saying 'Blue Mountains National Park' and pointing south along the river, as well as signs prohibiting camping. After a while, the trail comes to a small gate and a 'Blue Mountains National Park' sign.

23.99 | Coxs River Blue Mountains NP Entry

(3.2 km 1 hr 15 mins) Continue straight: From the gate, this walk heads south, keeping the Cox's River to the right. The track is quite well-defined around here but tends to fade when going through areas of boulders and grasslands. There are steep hills on both sides of the creek, and some great views to the south. About 1.3 km past the gate, the trail crosses the river - At the time of writing, this was marked by a large stick stuck into the ground, ahead of which the dense bushland comes down to the river bank. After crossing the river, the track continues along the western bank, keeping the river to the left. This continues for approximately 1.6 km until crossing back to the eastern bank of the river. Note: This crossing is not as noticeable as the first one and therefore it is necessary to watch for the track on the opposite

side of the creek. The track continues south along the river, though staying about 30m back from the banks. The walk passes several small campsites and soon comes to the junction of Breakfast Creek (which goes to the left).

27.23 | Breakfast Creek Campsite

This campsite is located at the junction of the Cox's River and Breakfast Creek. Fresh water is available from the Cox's River but should be treated before drinking. There are no facilities at this campground.

27.23 | Int of Coxs Ck and Breakfast Ck Trks

(3.7 km 1 hr 33 mins) Turn left: From the junction, this walk heads east along Breakfast Creek, keeping the creek to the right. Very soon, the track crosses to the southern bank, but its easier just to walk along the creekbed for the first little section. After joining up with the track on the western bank, the walk continues east. This continues for several kilometres until the trail stays on the northern bank for quite a large section before climbing up and over a small steep knoll and then joining back up with the river on the eastern side. After crossing the knoll, the track continues east in the same manner as before, with the track frequently crossing the creek. The track comes to a distinct turn in the creek, where it heads north, and an intersection with a rough bush track coming down through Bad Dog Gully from the Blackhorse Ridge Track.

30.97 | Breakfast Ck and Blackhorse Ridge Trk Int

(3.1 km 1 hr 26 mins) Continue straight: From the intersection, this walk heads north-east on the track running next to Breakfast Creek. The track crosses the creek at numerous points, while steadily and gradually climbing. Approximately 1km after the intersection and on the east side of the creek, the track passes a reasonably large clearing which has clearly been used as a campsite. From here, the walk continues north-east along the bush track until gradually turning more to the east and the creek becomes largely dried up. Near the top of the creek, the track turns right and sharply heads uphill through the cleared grasslands to the east. The walk follows a faint outline of a management trail. This continues until the track bends to the north (left) and heads along the management trail, passing by a sign saying 'Blue Mountains National Park - Please Take All Rubbish With You'. Approximately 50m up the hill from here, the walk crosses over a fence at a National Parks stile, then comes to an intersection with a more distinct management trail.

34.1 | Int of Ironpot Mtn and Dunphys Servicetrails

(290 m 8 mins) Veer right: From the stile, this walk turns to the right, initially heads east on the management trail. This heads up the hill for approximately 250m until coming to a campsite marked with a signpost saying 'Dunphy's Camping Area'.

34.39 | Dunphys Camping Area

Dunphy's camping area is at a large clearing next to the very southern end of Megalong Valley Rd. There is a large, well-built toilet, barbeques with shelter and a rainwater tank. There are also information signs on the walks and tracks in the area. The campsite is next to private property so be prepared to wake up in the morning to cows and horses wandering around the campground.

34.39 | Dunphys Camping Area

(720 m 21 mins) Veer left: From Dunphy's camping area, this walk heads south-east, steeply up the management trail following the signs to the 'Bellbird Ridge Lookout Track'. Once reaching the first rise, the track turns slightly north and continues to climb more gradually. Once reaching the ridge, the track continues along the flat management trail, gradually turning back to the east until coming to a large gate signposted 'Blue Mountains

National Park'. About 150m later, the walk comes to an intersection marked by a green signpost saying 'Bellbird Point 1.5km'.

35.11 | Int Dunphys Servicetrail and Bellbird Ridge L.O. t

(570 m 11 mins) Continue straight: From the intersection, this walk heads east along the wide management trail for approximately 550m. The walk then comes to an intersection with a more distinct management trail, signposted 'Medlow Gap Management Trail', directly under the high-tension power lines.

35.68 | Int Medlow Gap Management Trail and Carlons Head t

(550 m 28 mins) Continue straight: From the intersection (at the 'Medlow Gap Management Trail' sign), this walk takes the overgrown management trail north-east under the power lines. Near the tower, the walk turns to the east (right), following the rough bush track directly up the hill. This section of the track is very steep and often slippery. The track continues to be very steep until reaching the first set of cliffs. The track heads around to the north slightly (left) around the knoll for approximately 50m until coming to a chimney and set of chains on the rock, this is the bottom of Carlon Head Pass.

36.23 | Bottom of Carlon Head Pass

(100 m 20 mins) Continue straight: From the bottom of Carlon Head Pass, the climb starts, heading up four main climbs in close succession. Ensure the chain is safe to use before starting to climb, check the pegs are secure before use. The walk then heads up the cliff using the chain, pegs and carved foot holds up the cliff. Once at the top there is a fantastic view back across the valley. #####Please note these chains are rusting and a walker reported (April 2011) that the lower peg on the chain broke, this pass is particularly hazardousness #####

36.32 | Carlon Head Pass

Carlon Head Pass has a chain and metal spikes to assist with three consecutive drops of about five metres each. This is a vertical climb/descent and the chain is secured to the rock. Great care is required to scale Carlon Head pass safely as it is very exposed.

36.32 | Top of Carlon Head Pass

(1.3 km 27 mins) Continue straight: From the top of Carlon Head Pass, this walk heads east away from the view, through thick forest and scrub. The track is unclear much of the way, but it follows the ridge line till coming to the public toilets at the fire tower on Bushwalkers Hill.

37.64 | Fire Tower

(9.6 km 3 hrs 27 mins) Turn left: From the fire tower at the top of Bushwalkers Hill, this walk heads north, following the dirt road through the thick gum tree forest and through the scrub. The trail undulates along Narrow Neck ridge, until it comes to the intersection of the southern Castle Head track.

Continue straight: From the intersection, this walk follows the dirt road up to the top of the steep hill. The track then flattens out and continues along until it reaches the intersection of the northern Castle Head track.

Continue straight: From the intersection, this walk heads north, following the dirt road as it undulates along the ridge for a while, before it reaches the National Park gate and the car park just on the other side. (For emergency access, keys to the National Park gate are available from the local council, police and National Parks services.)

Continue straight: From the National Park gate, this walk follows Glenraphael Drive north through the parking area. The dirt road continues through the bush, undulating along the ridge for about 1km before coming to the signposted intersection at the top of the Golden Stairs, with some more

car parking either side of the road.

Continue straight: From the Golden Stairs car park, this walk follows the dirt road north, down the gentle hill and along the ridge as it undulates up and down for about 1km, before reaching the Sydney Water management trail - this is closed to the public at all times.

Veer right: From the intersection, this walk follows the dirt road heading up the hill and undulating along the ridge for about 1km, before it climbs up to the intersection with Cliff Drive.

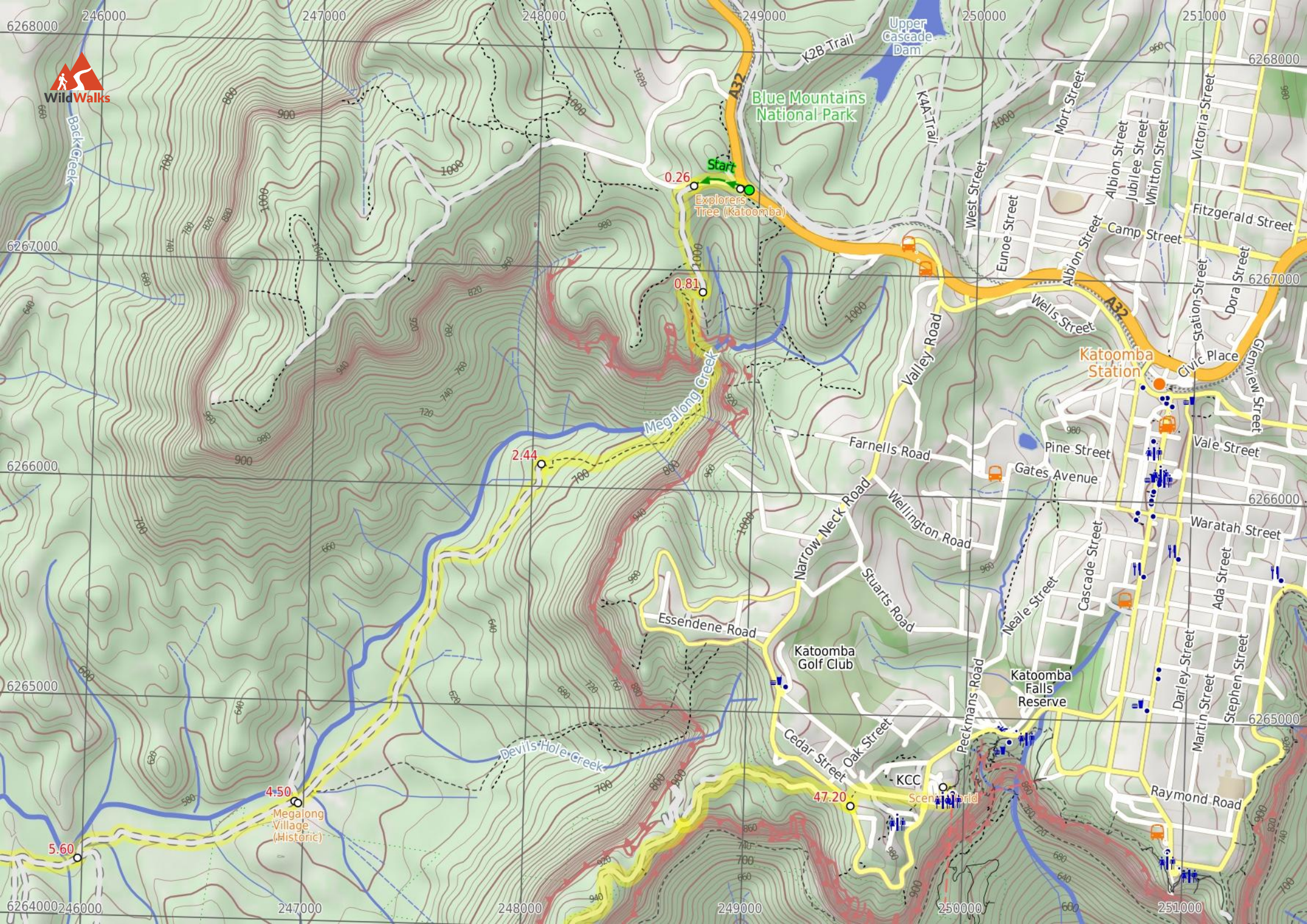
47.2 | Int of Glenraphael and Cliff Drives

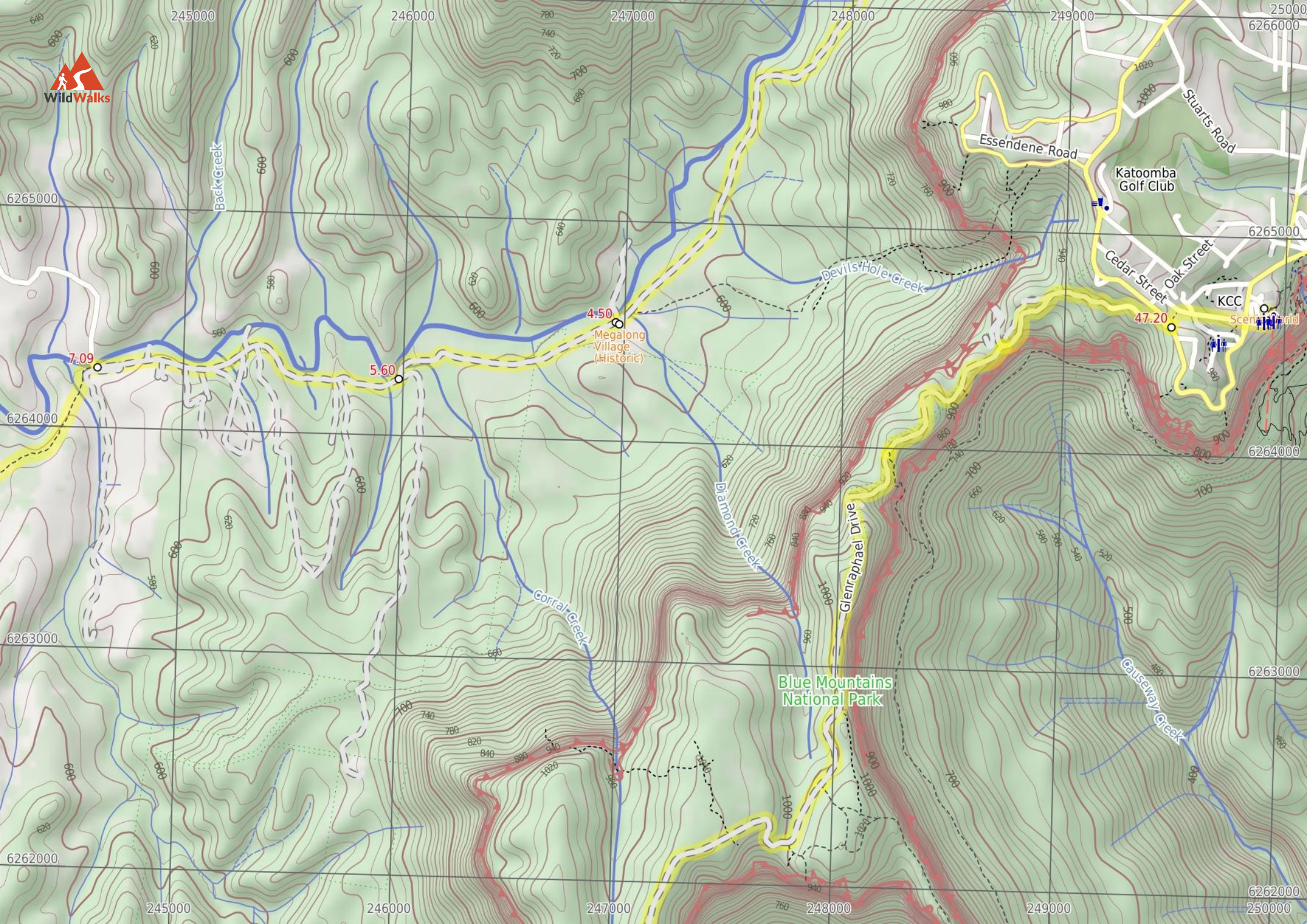
(570 m 11 mins) Turn sharp left: From the intersection, this walk heads up Cliff Drive briefly, then follows the management trail on the right, just past the house. At the end of the trail, this walk turns right onto Violet Street, following this to the front entrance of Scenic World.

47.76 | Scenic World

Scenic World is one of the most renowned tourist attractions of Katoomba and the Blue Mountains. Located on the cliffs of the Jamison Valley, visitors can enjoy a ride on the Scenic Railway (the world's steepest incline railway) or the Scenic Cableway, into the Jamison Valley, and explore the Scenic Walkway from the base. Alternatively, the Scenic Skyway offers a bird's eye view over the valley, with a glass floor to enhance the experience. Scenic World also features a revolving restaurant, a cafe and a kiosk, in addition to the documentary theatre and souvenir shop. Rides can be purchased, starting from \$16 for adults and \$10 for children, and combination or family passes are available. [More info.](#)







Blue Mountains National Park

Back Creek

Megalong Village (Historic)

Katoomba Golf Club

Essendene Road

Stuart's Road

Devils Hole Creek

Cedar Street

Oak Street

KCC

Glenraphael Drive

Corral Creek

Diamond Creek

Gauseway Creek

6265000

6264000

6263000

6262000

245000

246000

247000

248000

249000

25000

245000

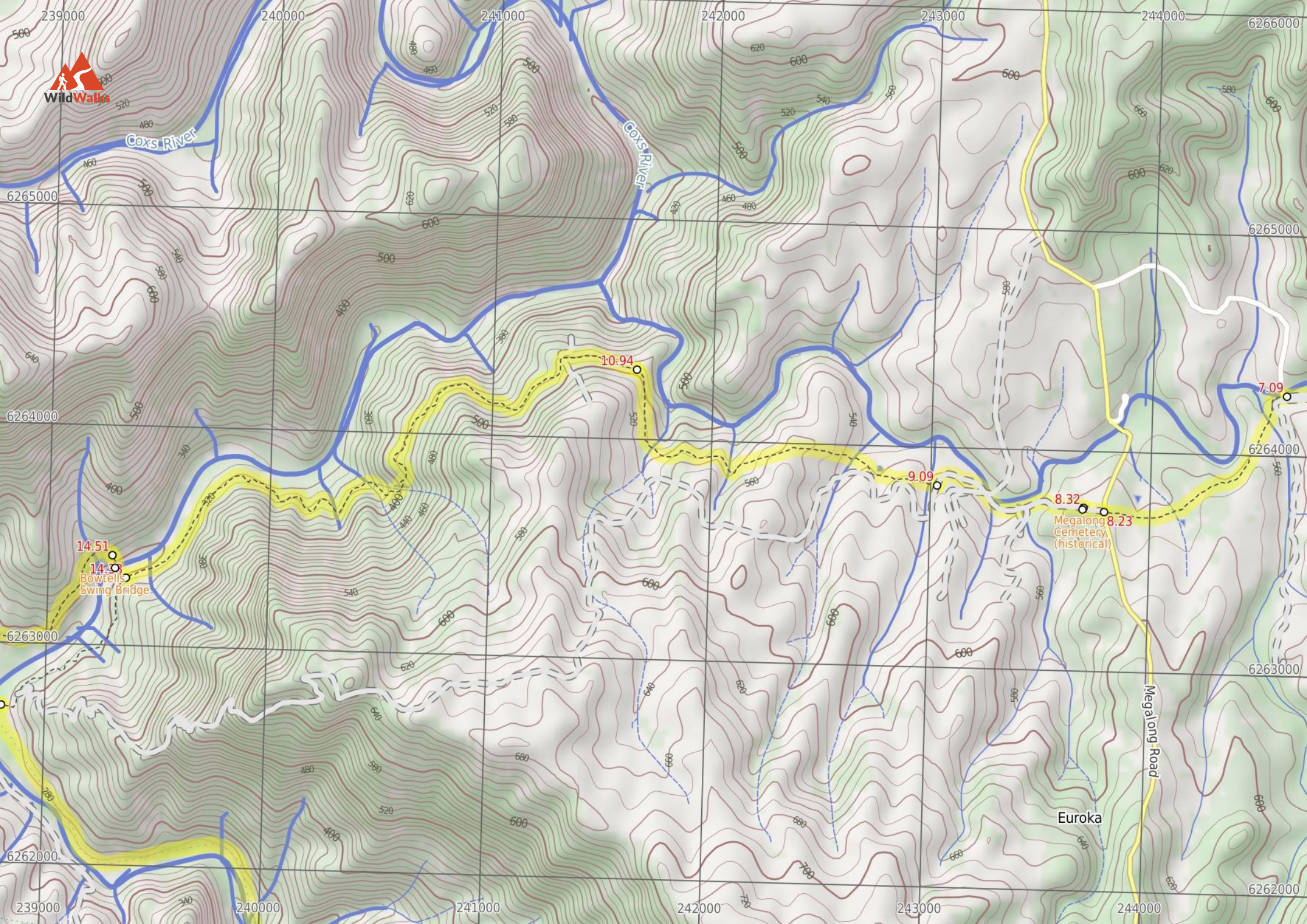
246000

247000

248000

249000

25000



Cocks River

Cocks River

Megalong Road

Eureka

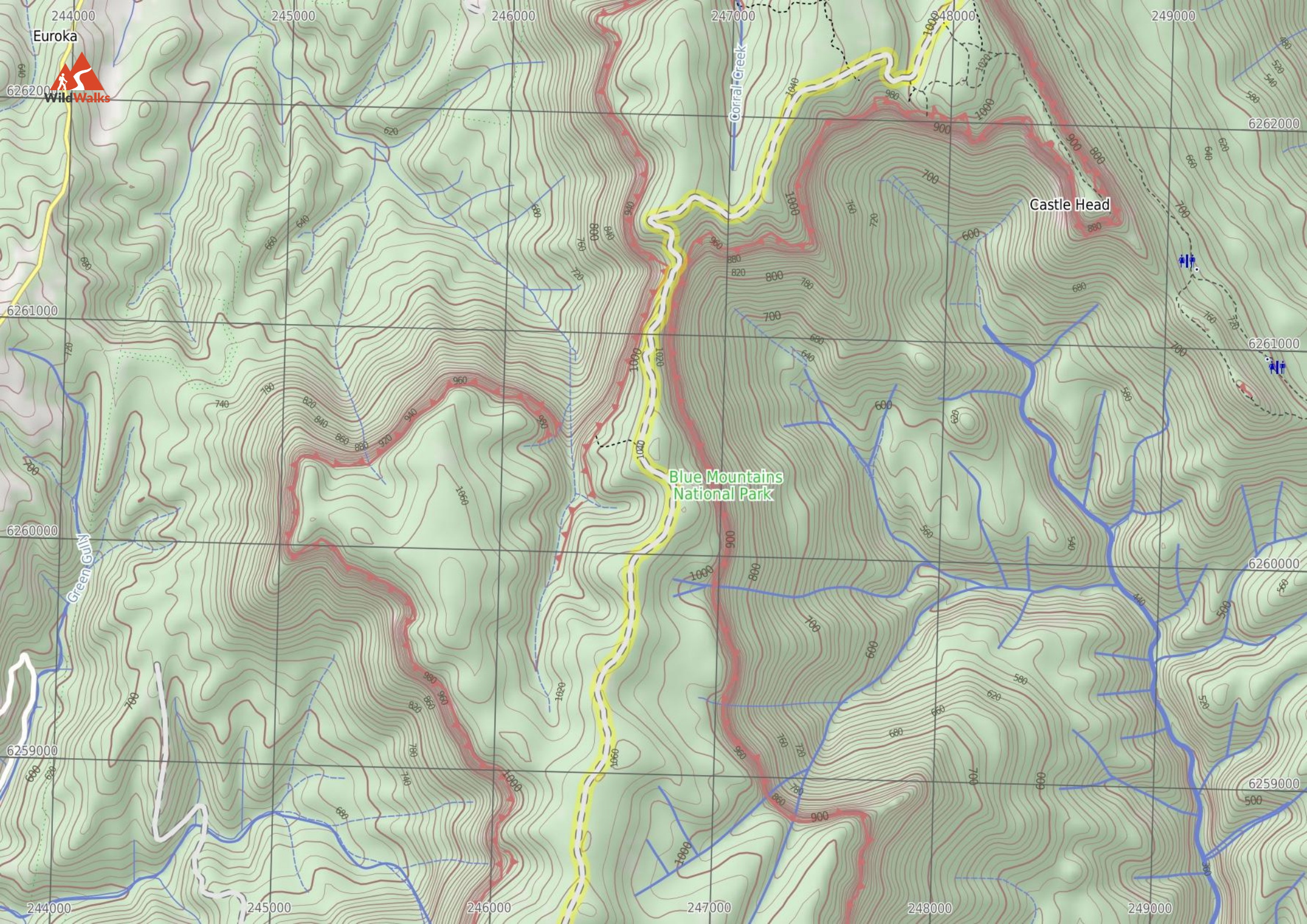
14.51
14.5
Bowtell's
Swing Bridge

10.94

9.09

8.32
Megalong 8.23
Cemetery
(historical)

7.09



Euroka

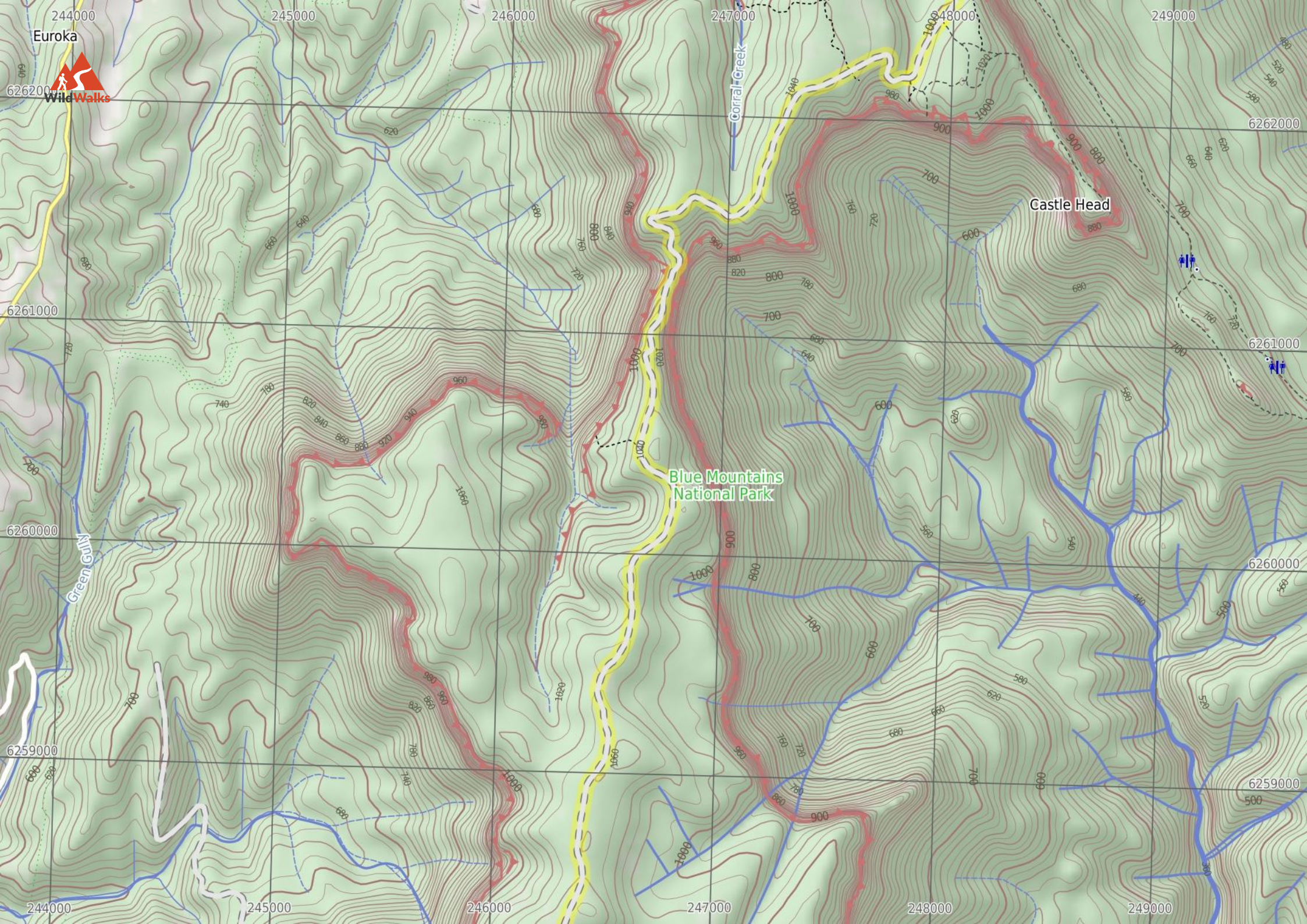


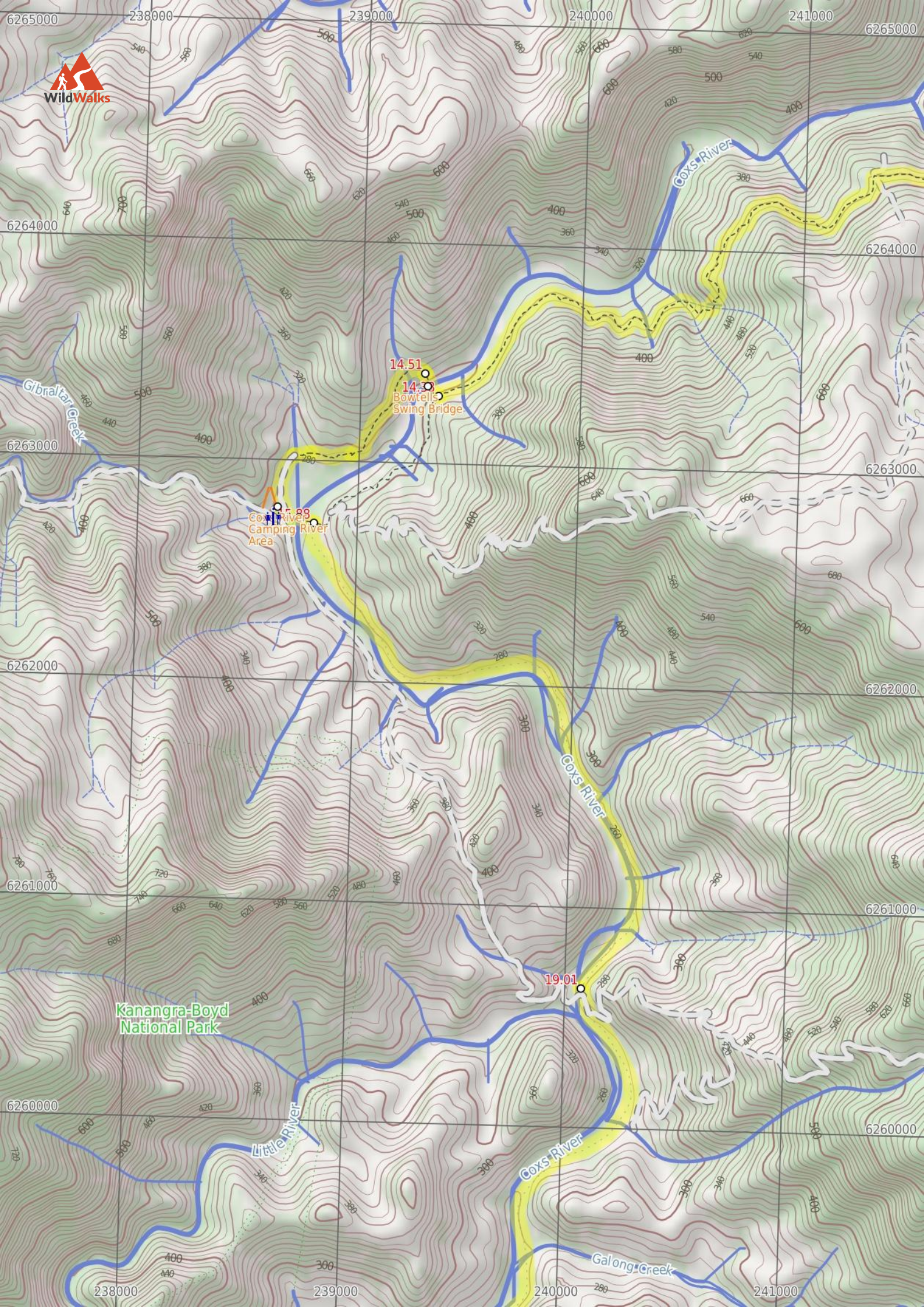
Castle Head

Blue Mountains
National Park

Corral Creek

Green Gully



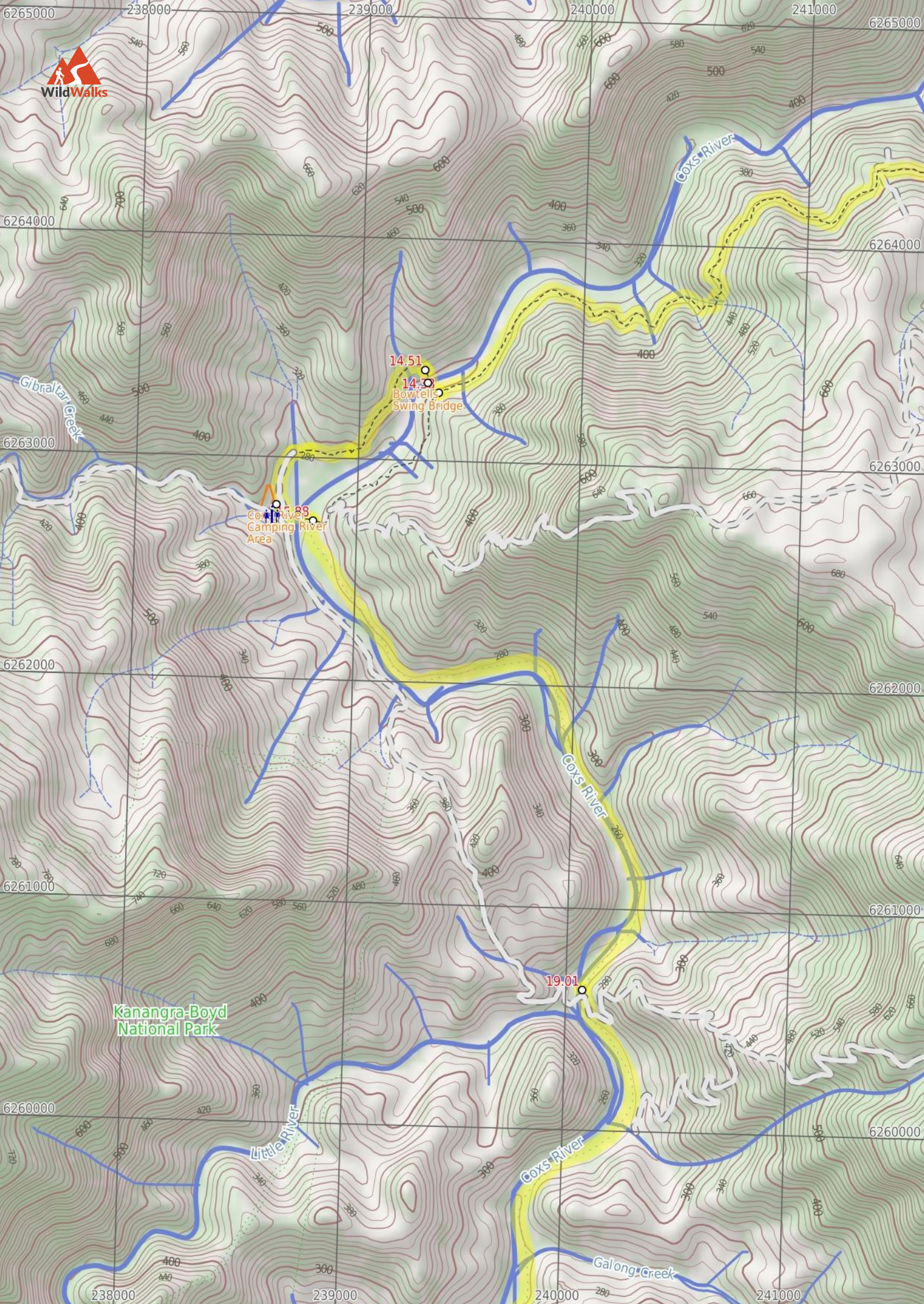


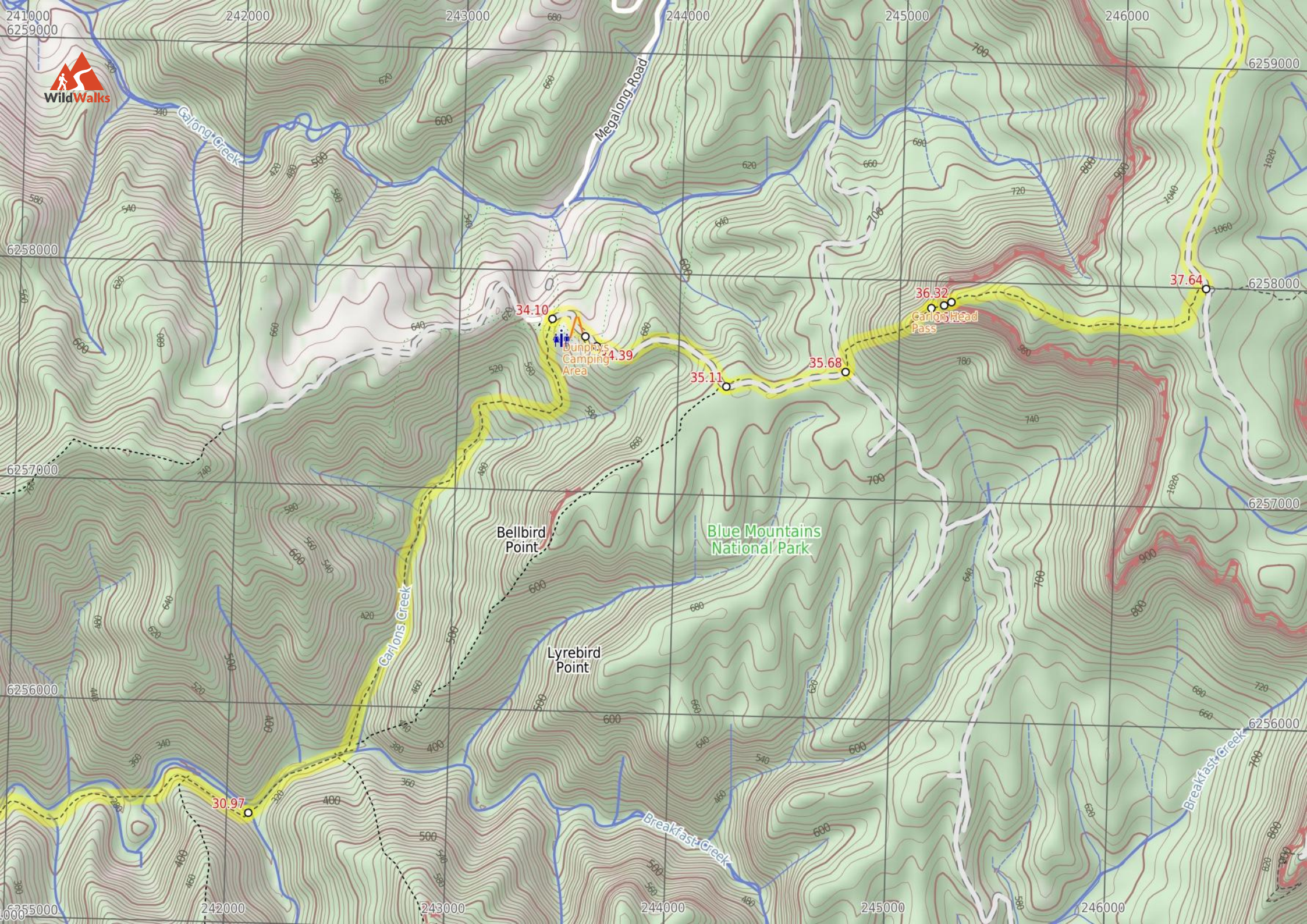
14.51
14.38
Bowtell's
Swing Bridge

14.38
Cocks River
Camping Area

19.01

Kanangra-Boyd
National Park





Carlong Creek

Megalong Road

34.10

Bunpays
Camping
Area

34.39

35.11

35.68

36.32
Carlong Head
Pass

37.64

Bellbird
Point

Blue Mountains
National Park

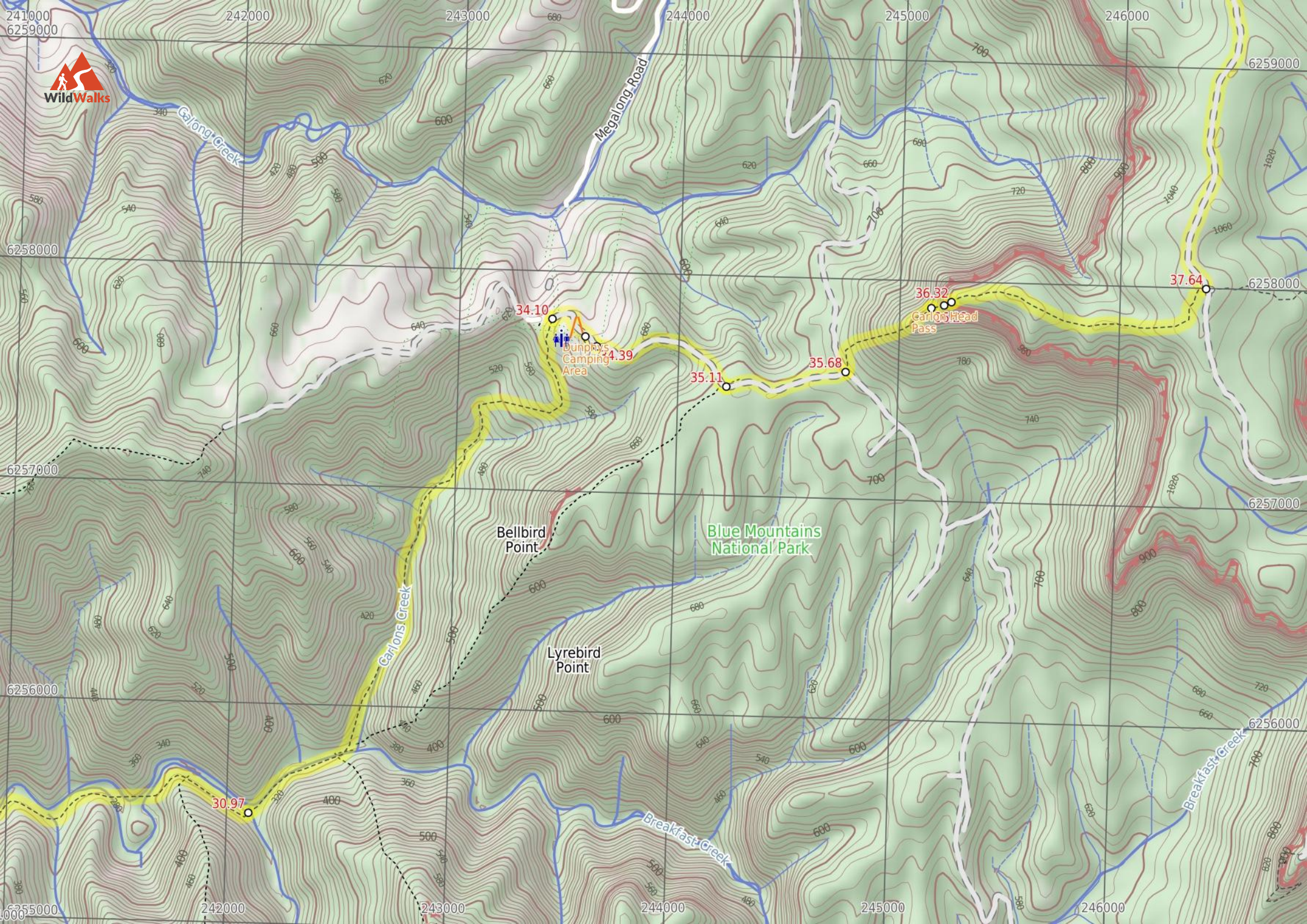
Lyrebird
Point

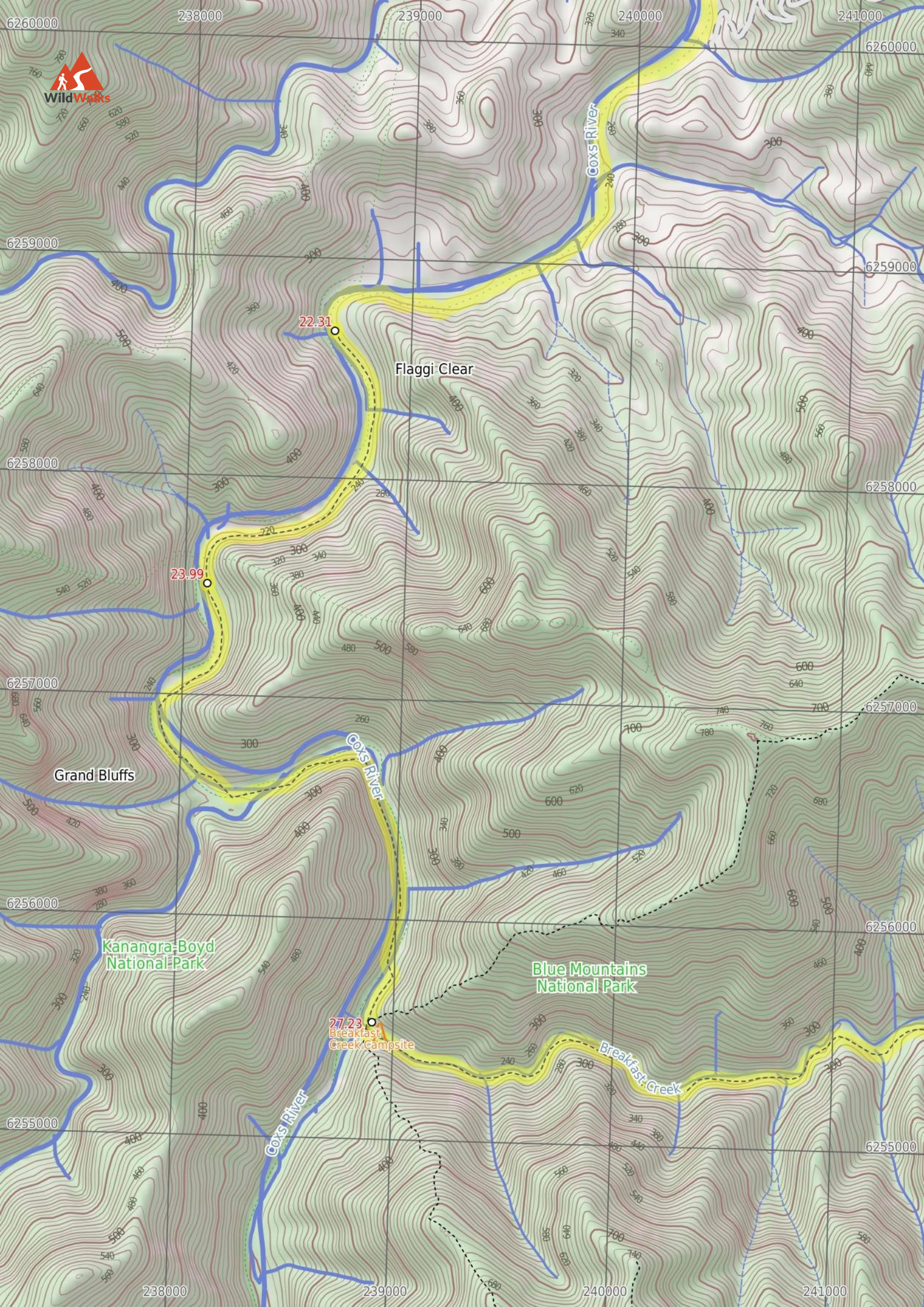
Carlons Creek

Breakfast Creek

Breakfast Creek

30.97





22.31

Flaggi Clear

23.99

Grand Bluffs

Kanangra-Boyd National Park

Blue Mountains National Park

27.23
Breakfast Creek Campsite

Breakfast Creek

Cocks River

Cocks River

6255000

6256000

6257000

6258000

6259000

6260000

238000

239000

240000

241000

Summary navigation sheet for the Cox's River return via Narrowneck



km	From	Up/Dwn	Length	Initial directions (Use full tracknotes and maps for more detail)
Start	Explorers Tree -33.704,150.2913 (GR Katoomba, 490674)	8 -6	260 m 5 mins	From the 'Explorers Tree' (at the intersection of Nellies Glen Rd and the Great Western Hwy), this walk follows the 'Six Foot Track - 200m' sign up along the sealed Nellies Glen Rd for just over 200m before turning ...
0.26	Six Foot Track Info Shelter -33.7038,150.2886 (GR Katoomba, 487674)	2 -68	550 m 12 mins	Continue straight: From the shelter and car park (on Nellies Glen Rd), this walk follows the 'Six Foot Track' sign around the lower locked metal gate to follow the management trail gently downhill.
0.81	Int of Six Foot Track and Norths Lookout Trail -33.7082,150.289 (GR Katoomba, 488669)	26 -337	1.6 km 44 mins	Turn right: From the intersection, this walk follows the 'Six Foot Track' sign, fairly steeply down the management trail past the 'Nellies Glen' metal plaque and, about 10m later, past the timber 'Nellies Glen' sign.
2.44	Int at Lower Nellies Glen -33.7152,150.2811 (GR Katoomba, 480661)	15 -102	2.1 km 37 mins	Veer left: From the clearing, this walk follows the wide trail gently downhill while keeping the valley to your right.
4.50	Megalong Village site -33.729,150.269 (GR Katoomba, 470645)	8 -23	1.1 km 18 mins	Continue straight: From the beside the historic Megalong 'Village site', this walk heads along the wide trail, initially keeping the horse paddock and view to the escarpment to your left after just shy of 250m this ...
5.60	Intersection of Medlow Gap Management Trail and 6 Foot Track -33.7313,150.2583 (GR Katoomba, 460643)	21 -39	1.5 km 26 mins	Veer right: From the intersection, this walk heads west along the Nellies Glen Road trail, initially keeping the power lines to your right.
7.09	Megalong Ford -33.7309,150.2435 (GR Hampton, 446643)	40 -21	1.1 km 22 mins	Continue straight: From the intersection, this walk follows the 'Six Foot Track' sign over the fence using the stile.
8.23	Int of 6 Foot Track and Megalong Rd -33.7356,150.2346 (GR Hampton, 438637)	0 -5	100 m 2 mins	Continue straight: From the car park on Megalong Road (about 400m south of Megalong Creek), this walk follows the 'Six Foot Track' sign over the cattle grate or stile and goes beside the large sheltered 'Six Foot Tr...
8.32	Megalong Cemetery -33.7354,150.2336 (GR Hampton, 437637)	14 -34	770 m 15 mins	Continue straight: From beside 'Megalong Cemetery', this walk heads gently downhill along the dirt road for about 80m to pass through gate with a 'No Through Road' sign.
9.09	Int Near Guyver Bridge -33.7345,150.2264 (GR Hampton, 430638)	69 -122	1.9 km 41 mins	Turn right: From the intersection, this walk follows the 'Six Foot Track' sign downhill along the narrow track into the valley.
10.94	Private Gate -33.7297,150.2117 (GR Hampton, 417643)	157 -348	3.4 km 1 hr 25 mins	Continue straight: From the gate, this walk heads downhill along the narrowing track, keeping the valley to your right.
14.38	Bowtells Swing Bridge -33.7383,150.1866 (GR Hampton, 394633)	15 -8	130 m 4 mins	Turn right: From the intersection, this walk follows the 'Alternative Bridge When River High' sign down the timber steps to the southern end of the 'Bowtells Bridge'.
14.51	Bowtells Bridge West -33.7373,150.1859 (GR Hampton, 393634)	56 -92	1.2 km 28 mins	Continue straight: From the north side of the bridge, this walk heads up the timber steps through the dense forest to soon pass the 'Bowtells Bridge' sign.
15.71	End of day 1 -33.7433,150.1787 (GR Hampton, 386627)	0 0	0 m	This is the planned overnight stay for the end of day 1, happy camping.
15.71	Coxs River Campsite -33.7433,150.1787 (GR Hampton, 386627)	3 -5	170 m 3 mins	Turn sharp left: From the the intersection south of the Coxs River Campsite, this walk follows the 'Six Foot Track' sign downhill for 40m to the sandy beach on the bank of the river.
15.88	Cox's River Campsite (East) -33.7435,150.1805 (GR Hampton, 388627)	87 -106	3.1 km 1 hr 1 mins	Turn right: From the east side of the Cox's River Campsite, this walk heads south-east alongside the river, through the pastures where cows often graze.
19.01	Little River and Coxs River Int -33.7625,150.1936 (GR Jenolan, 401606)	93 -119	3.3 km 1 hr 5 mins	Turn left: From the intersection, this walk heads south-east along the management trail, keeping the river to the right.
22.31	Quartpot Gully/ Coxs River Track Intersection -33.7799,150.1776 (GR Jenolan, 387587)	66 -67	1.7 km 35 mins	Continue straight: From the intersection, this walk heads south, keeping the Cox's River on the right.

Summary navigation sheet for the Cox's River return via Narroneck



km	From	Up/Dwn	Length	Initial directions (Use full tracknotes and maps for more detail)
23.99	Coxs River Blue Mountains NP Entry -33.7902,150.1714 (GR Jenolan, 381575)	169 -186	3.2 km 1 hr 15 mins	Continue straight: From the gate, this walk heads south, keeping the Cox's River to the right.
27.23	Int of Coxs Ck and Breakfast Ck Trks -33.8086,150.1791 (GR Jenolan, 389555)	281 -185	3.7 km 1 hr 33 mins	Turn left: From the junction, this walk heads east along Breakfast Creek, keeping the creek to the right.
30.97	Breakfast Ck and Blackhorse Ridge Trk Int -33.8093,150.2139 (GR Jenolan, 421555)	361 -54	3.1 km 1 hr 26 mins	Continue straight: From the intersection, this walk heads north-east on the track running next to Breakfast Creek.
34.10	Int of Ironpot Mtn and Dunphys Servicetrails -33.789,150.2289 (GR Jenolan, 434578)	32 -1	290 m 8 mins	Veer right: From the stile, this walk turns to the right, initially heads east on the management trail.
34.39	Dunphys Camping Area -33.7902,150.231 (GR Jenolan, 436577)	90 -23	720 m 21 mins	Veer left: From Dunphy's camping area, this walk heads south-east, steeply up the management trail following the signs to the 'Bellbird Ridge Lookout Track'.
35.11	Int Dunphys Servicetrail and Bellbird Ridge L.O. trk -33.7918,150.2374 (GR Jenolan, 442575)	24 -9	570 m 11 mins	Continue straight: From the intersection, this walk heads east along the wide management trail for approximately 550m.
35.68	Int Medlow Gap Management Trail and Carlons Head trk -33.7912,150.2432 (GR Jenolan, 448576)	192 -10	550 m 28 mins	Continue straight: From the intersection (at the 'Medlow Gap Management Trail' sign), this walk takes the overgrown management trail north-east under the power lines.
36.23	Bottom of Carlon Head Pass -33.7886,150.2475 (GR Jenolan, 451579)	102 0	100 m 20 mins	Continue straight: From the bottom of Carlon Head Pass, the climb starts, heading up four main climbs in close succession.
36.32	Top of Carlon Head Pass -33.7884,150.2484 (GR Jenolan, 452579)	91 -27	1.3 km 27 mins	Continue straight: From the top of Carlon Head Pass, this walk heads east away from the view, through thick forest and scrub.
37.64	Fire Tower -33.7878,150.2609 (GR Jamison, 464580)	361 -454	9.6 km 3 hrs 27 mins	Turn left: From the fire tower at the top of Bushwalkers Hill, this walk heads north, following the dirt road through the thick gum tree forest and through the scrub.
47.20	Int of Glenraphael and Cliff Drives -33.7292,150.2962 (GR Katoomba, 495646)	7 -34	570 m 11 mins	Turn sharp left: From the intersection, this walk heads up Cliff Drive briefly, then follows the management trail on the right, just past the house.